

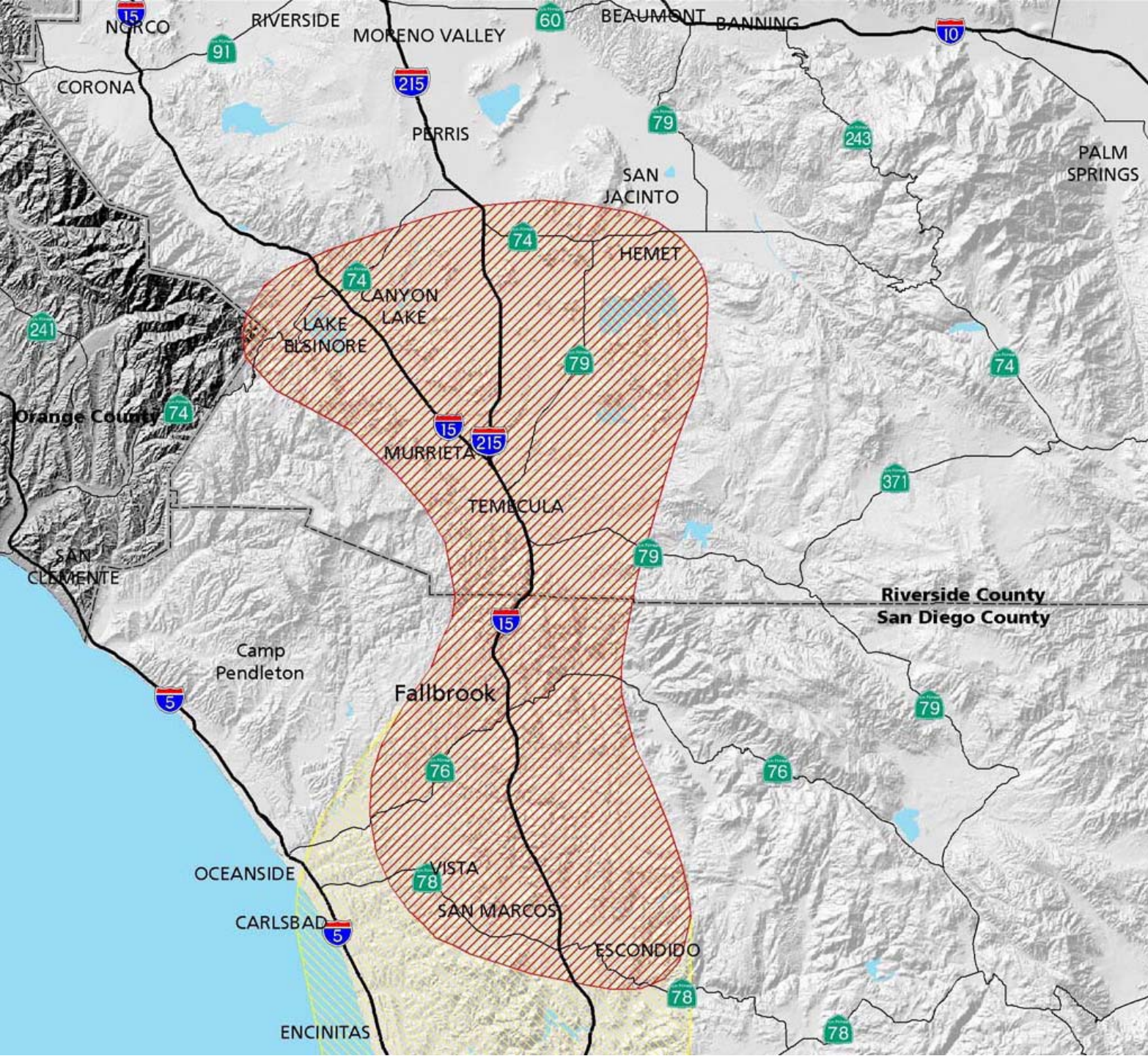
I-15

Interregional
Partnership



I-15 IRP Phase II Final Draft Report

Board of Directors
April 27, 2007





I-15 Interregional Partnership Study Area and Corridor

-  Study Area
-  Study Corridor



Strategies Pursued in Phase II

- Economic Development
- Transportation
- Housing

Economic Development Strategy

- Establishment of the Economic Development Working Group (EDWG)
- Employment Cluster Study

Transportation Strategy

- Cooperative County Line Study
- Coordinated Transit Planning
- Discussions on Vanpool Coordination
- Commuter Rail Service Study

Housing Strategy

- Smart Growth Concept Map
- Scope of Work for Pilot Feasibility Study for Workforce Housing
- SPRINTER Working Group
- Coordination with Riverside on Smart Growth Planning

Next Steps

- Overall Coordination
 - Policy
 - Executive
 - Staff
- Economic Development
- Transportation
- Housing

Recommendation

The Borders Committee recommends that the Board of Directors approve the I-15 Interregional Partnership Phase II Final Draft Report and submission of the Report to Caltrans.

I-15

Interregional
Partnership

I-15 IRP Phase II Final Draft Report

Board of Directors

April 27, 2007

